



ID Lock



Z-Wave Module

Firmware Update Guide

ENGLISH

V1.4 EN 19-11-21

Prerequisites

To upgrade your Z-Wave module you need the following:

1. An ID Lock electronic door lock
2. An ID Lock Z-Wave module
3. ID Lock Z-Wave firmware file (hex-file)
4. SiLabs Z-Wave PC Controller 5 (registration required to download developer tool)
5. Z-Wave UZB controller (i.e. Aeontec Gen5 UZB)
6. A computer running Windows 10 with at least 1 USB port

To update the Z-Wave module it must be excluded from your existing Z-Wave network. Please refer to the Z-Wave manual on idlock.no/kundesenter and your Z-Wave controller guide for details on how to exclude a door lock from your network.

Before inclusion we recommend you replace your batteries with 8 new LR06 batteries to ensure nothing goes wrong during the OTA (Over The Air) upgrade.

The Z-Wave firmware hex-file is available on idlock.no/kundesenter. Look for them in the Z-Wave section on the right side.

Contents

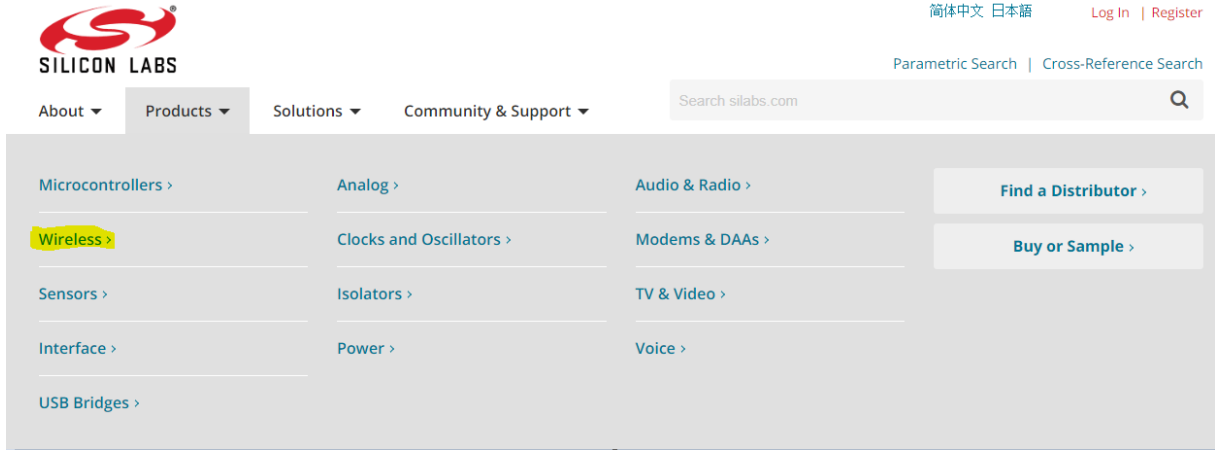
Prerequisites.....	1
WARNING!	1
Access to software.....	2
NOTE!	5
How to update your device:	6
NOTE!	10

WARNING!

Updating the Z-Wave Module is at own risk and without any warranties. ID Lock is not responsible for any faults that may occur during the update process.









Access to software

1. To get access to SiLabs Z-Wave PC Controller software enter SiLabs webpage on silabs.com, select “Products” and press on “Wireless >” (marked yellow):



2. Scroll down and press “Learn more >” below the Z-Wave section (marked yellow):

Choose the Wireless Protocol That Fits Your Needs:

 Bluetooth Get up and running with the latest Bluetooth technologies, including Bluetooth 5 and Bluetooth mesh. Learn More >	 Zigbee Build robust, scalable Zigbee mesh products with SoCs, SIP modules, and advanced software. Learn More >	 Thread Speed development with our Thread mesh networking modules, SoCs, and proven network analysis tools. Learn More >	 Proprietary Add high-performance, low-power wireless to your products ranging from 142 MHz to 2.4 GHz. Learn More >
 Wi-Fi Start prototyping your application with Wi-Fi modules designed specifically for the IoT. Learn More >	 Z-Wave Easily create smart home products and services that work together with hundreds of brands. Learn More >	 Multi Take advantage of single-chip solutions for Bluetooth, Zigbee, Thread, and sub-GHz wireless. Learn More >	 Xpress Drop-in, connect, and prototype your Bluetooth 5 and Wi-Fi applications with zero programming. Learn More >

**3. Scroll down and press “Read more >” below the Z-Wave Software section
(Marked yellow in picture below):**

<p>GETTING STARTED</p> <p>Getting Started with Z-Wave</p> <p>Get Started ></p>	<p>LEARNING CENTER</p> <p>Z-Wave Training and Resources</p> <p>Learn More ></p>	<p>CERTIFICATION</p> <p>Z-Wave Certification Program</p> <p>Learn More ></p>
<p>SPECIFICATIONS</p> <p>Z-Wave Specifications</p> <p>Read More ></p>	<p>SOFTWARE</p> <p>Z-Wave Software</p> <p>Read More ></p>	<p>APPLICATION NOTES</p> <p>Z-Wave Application Notes</p> <p>Read More ></p>

**4. To get access to PC Controller you need to download and accept terms for “Controller SDK” first. Press “Controller SDK >”
(Marked yellow in picture below):**

Z-Wave Software

<p>Embedded SDK ></p>	<p>Controller SDK ></p>	<p>Protocol Life Cycle ></p>
--------------------------	-----------------------------------	---------------------------------

**5. Scroll down and press “SDK Downloads” below “Z/IP Gateway SDK”
(Marked yellow in picture below):**

<p>Z/IP Gateway SDK</p> <p>Z/IP is a UDP/IP wrapper for Z-Wave command classes.</p> <p>SDK Downloads ></p>	<p>Z-Wave SDKs and Software</p> <p>Z-Wave controller middleware running over Z-Wave over IP (Z/IP)</p> <p>Access Downloads ></p>	<p>Development Tools</p> <p>PC Programmer, Ziffer and other tools.</p> <p>Access Tools ></p>
---	---	---

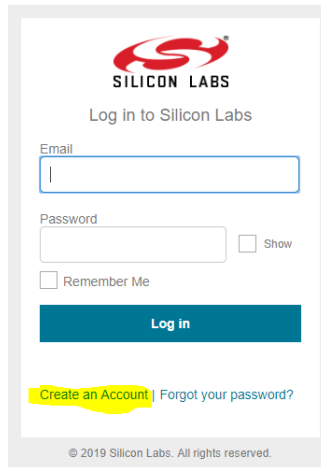
6. Scroll and press the button “Z/IP GW SDK 2.81.03 >” (Marked yellow in picture below):

Z/IP Gateway SDK 2.81.00 Downloads and Support Documents

Z/IP Gateway SDK 2.81.00 Downloads and Support Documents



7. You will now be asked to login or create an account. If you do not have an account, press “Create an Account” (Marked yellow in picture below):



SILICON LABS
Log in to Silicon Labs

Email

Password
 Show

Remember Me

[Create an Account](#) | [Forgot your password?](#)

© 2019 Silicon Labs. All rights reserved.

After registration you will receive a confirmation email. Confirm by clicking the link in the mail.

8. Go back to silabs.com and log in, get back to the button “Z/IP GW SDK 2.81.03 >” and press it again. You will now be asked to agree to the license agreement. Please do so in order to get access to PC Controller.



Z-Wave Controller Development Kit License Agreement

I agree to [Z-Wave Controller Development Kit License Agreement](#)

9. After pressing “Submit”, press “Return”.
You are now able to download the PC Controller.

**10. Find and press the button “Embedded SDK >”
(Marked yellow in picture below):**

Z-Wave Software



**11. Find and press the button “PC Controller >”
(Marked yellow in picture below):**

Z-Wave SDK 6.8x Downloads and Support Documents

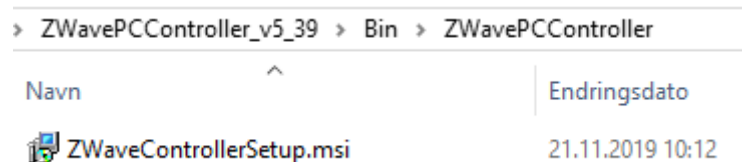
Download the latest Z-Wave 500 series SDK and documents for secured Z-Wave applications.



**12. Press the button “Download” to start download of the PC Controller software.
(Marked yellow in picture below):**



13. The setup file is located here:



NOTE!

SiLabs Z-Wave PC Controller is a developer tool without any warranties. Please be advised of SiLabs requirements for downloading the file and how to use the software.



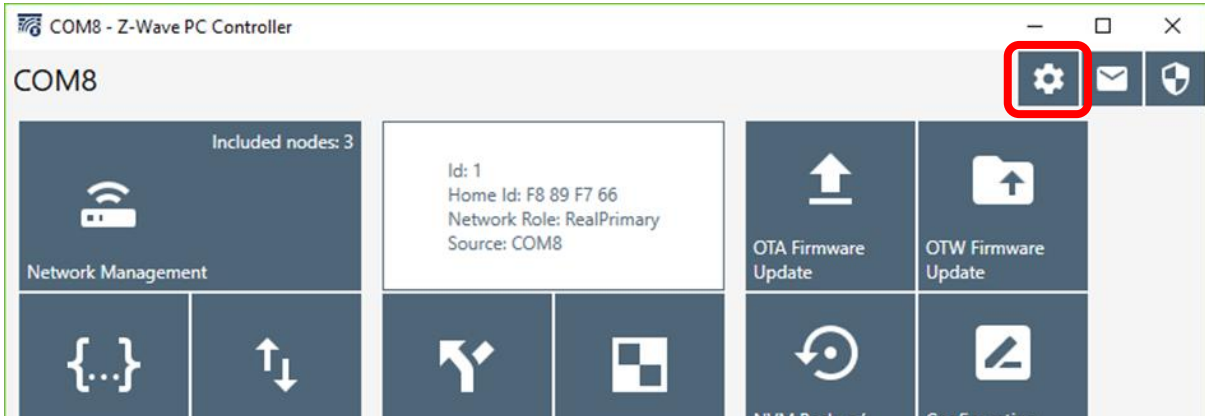
How to update your device:

Exclude the door lock from your controller (follow the instructions from your controller supplier)

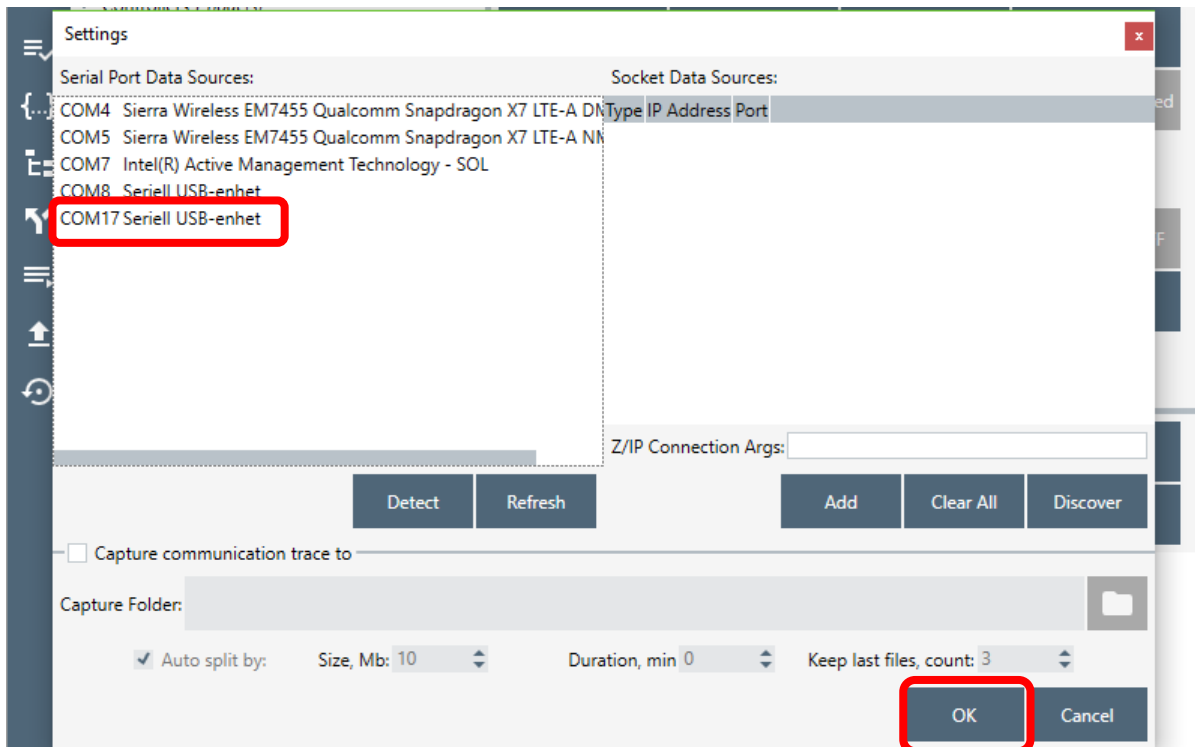
Insert the Z-Wave UZB controller to a USB port on your computer

Start SiLabs PC Controller 5

Click on Settings (the gear icon in the top right corner)



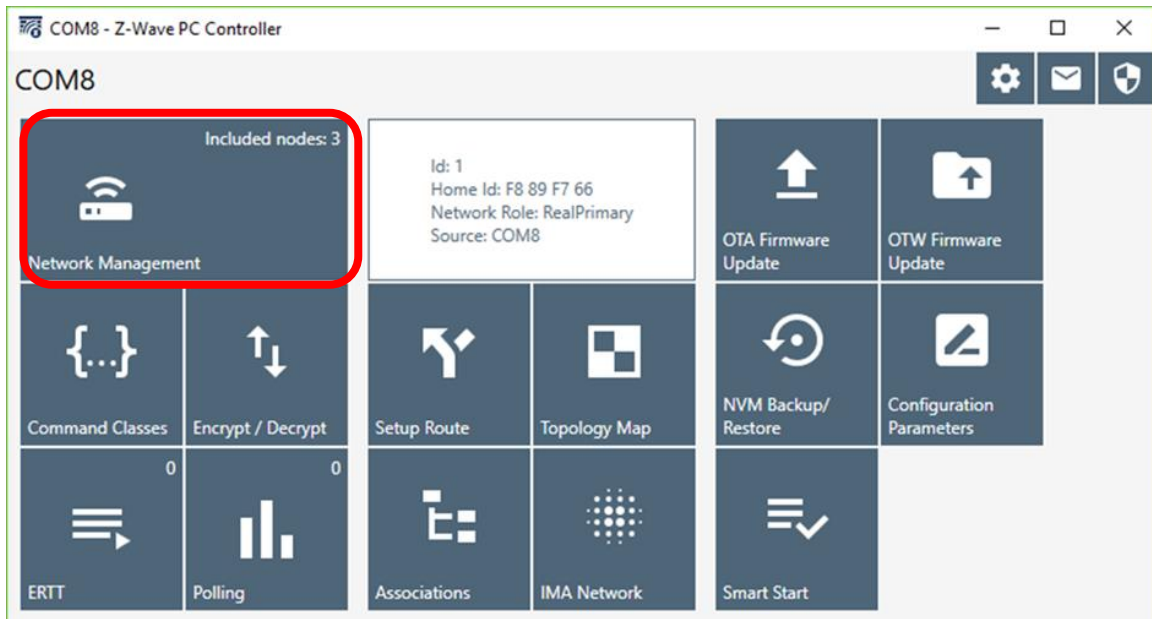
Check the recognized UZB controller on the list in the dialog window and click **OK**. If there's nothing there, click **DETECT** and then **REFRESH**. If the UZB controller still doesn't show up, you may need to install special drivers so please contact the manufacturer of the device for instructions.



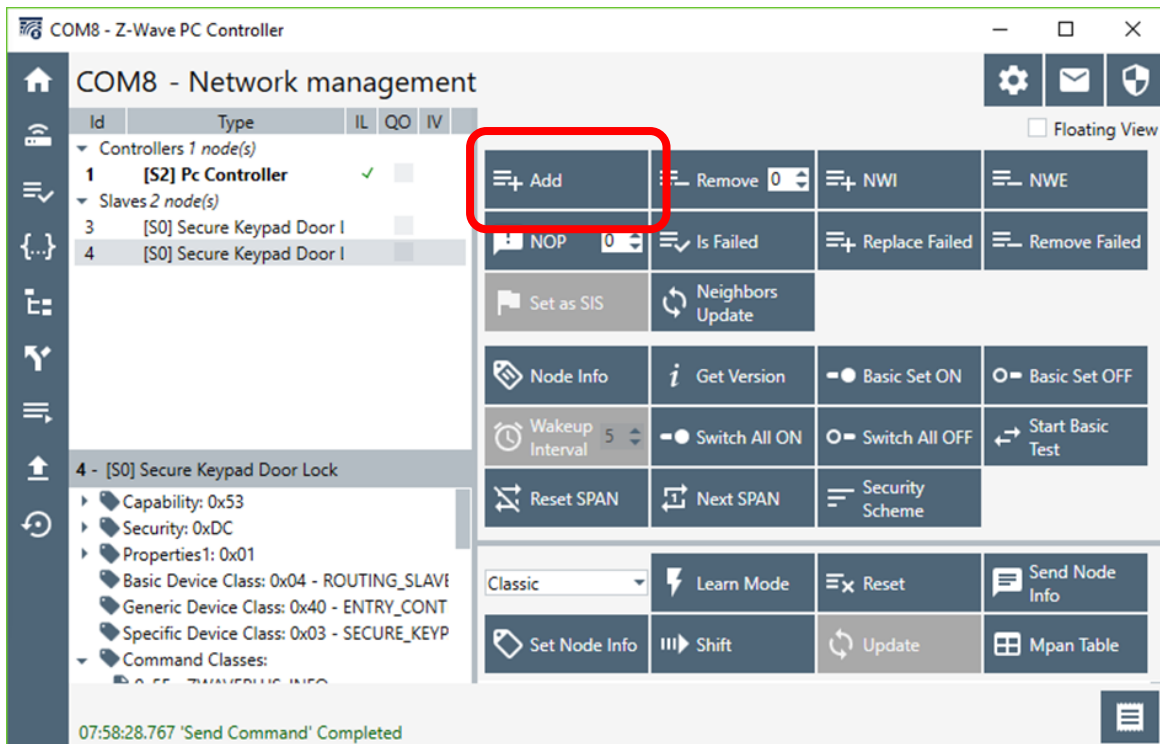


ID Lock

Click Network Management



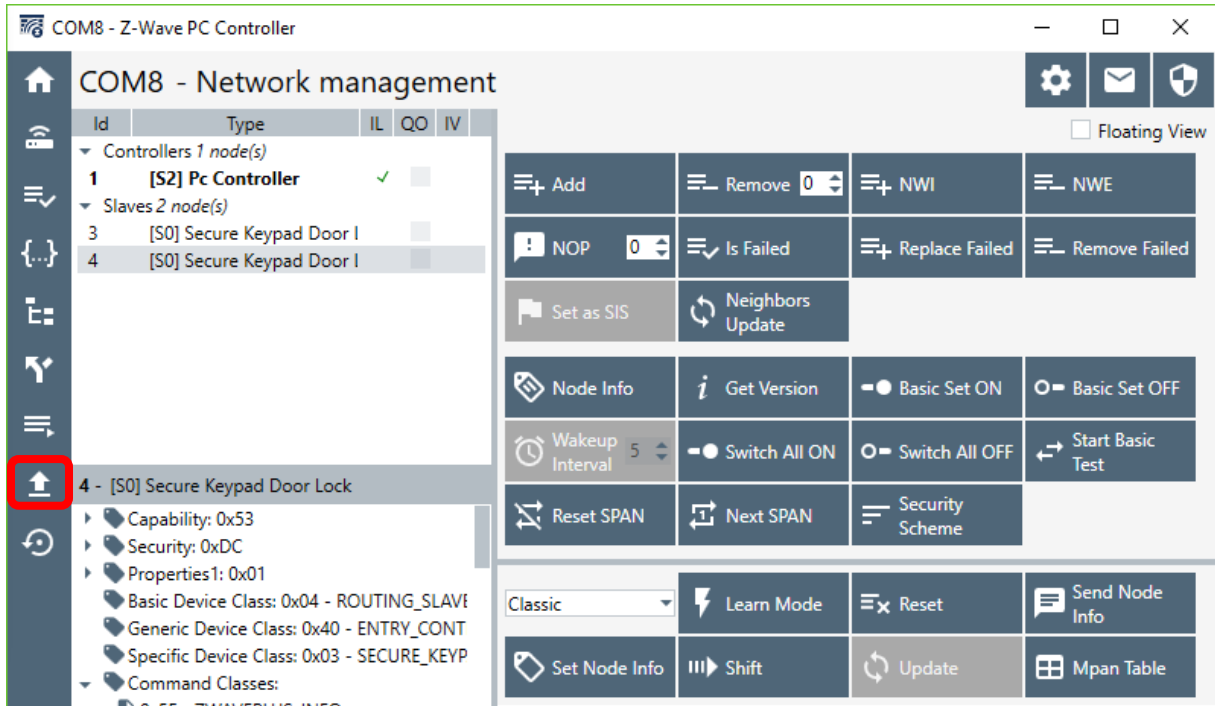
Click **ADD** to enroll the UZB controller in inclusion mode, then **activate inclusion mode on your door lock** (please refer to the Z-Wave manual for how to do this)



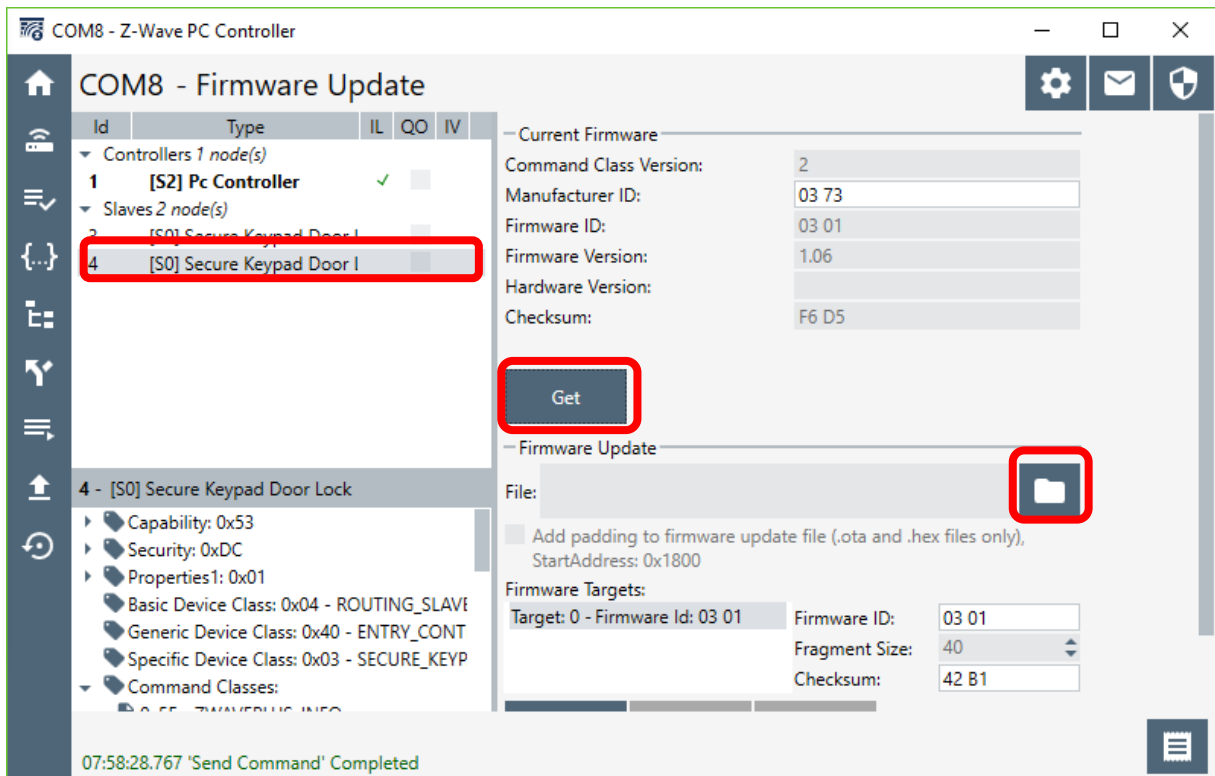
After a successful inclusion, click **ARROW UP ICON** to get to the update screen.



ID Lock



Check the added [S0] Secure Keypad Door Lock and click the GET button

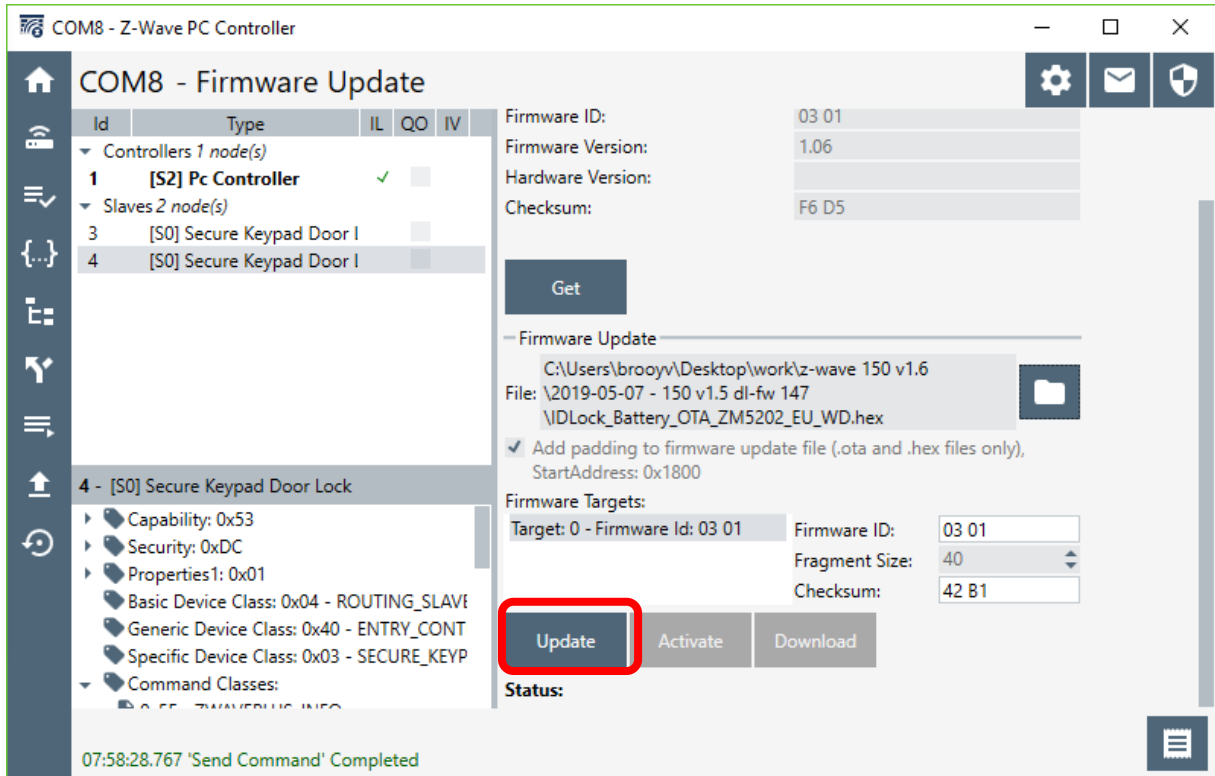


Click on the FOLDER button to select the downloaded hex-file.

Click on the UPDATE button to start update.

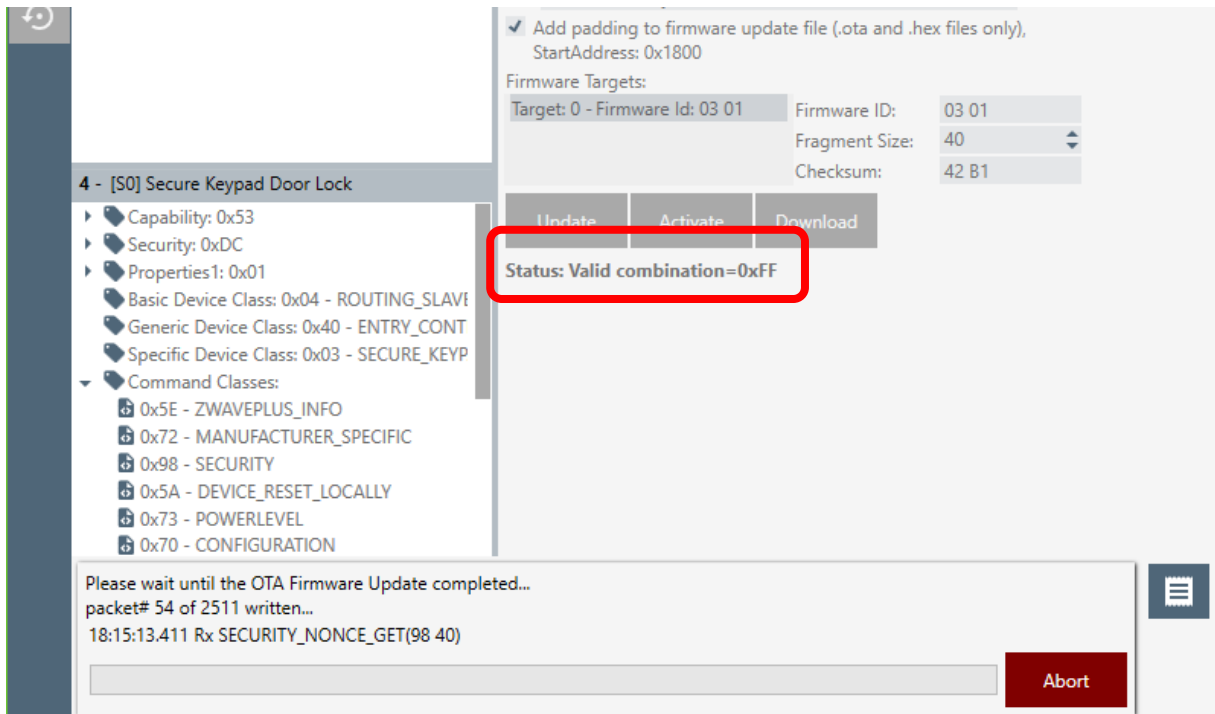


ID Lock

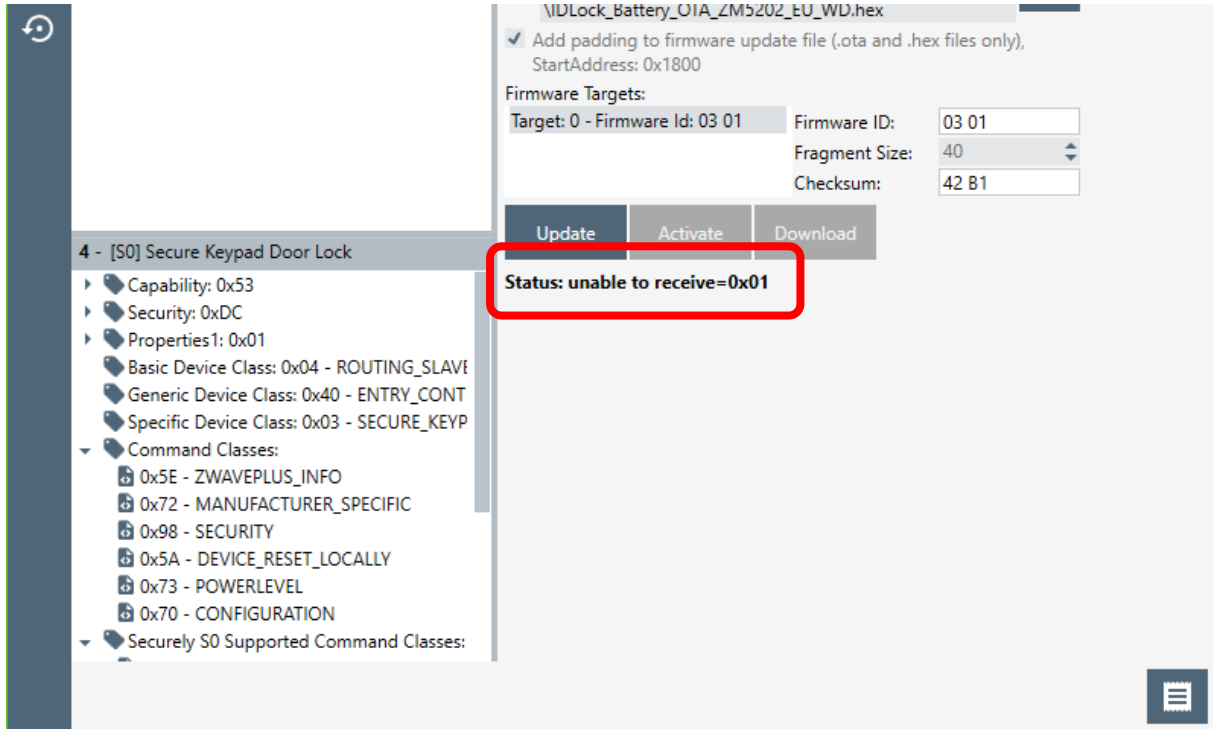


An update process may take a while, up to 15 minutes is quite normal.

Verify the process status. If correct, the status should always show: **Valid combination=0xFF**



If the update process fails or is aborted the status shows: **Unable to receive=0x01**



NOTE!

After an update of the Z-Wave module it *may* be required to perform a Z-Wave local reset and a factory reset of your door lock before including it in a new Z-Wave network.